

87654321

	REVISIONS		
REV	DESCRIPTION	DATE	APPROVED

D

C

B

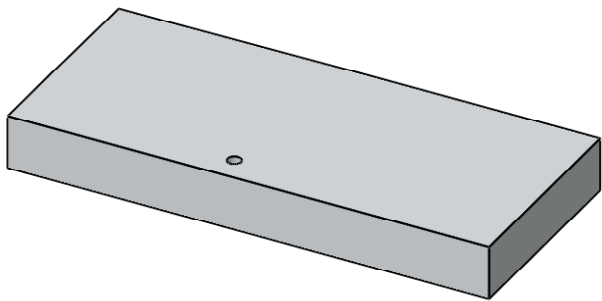
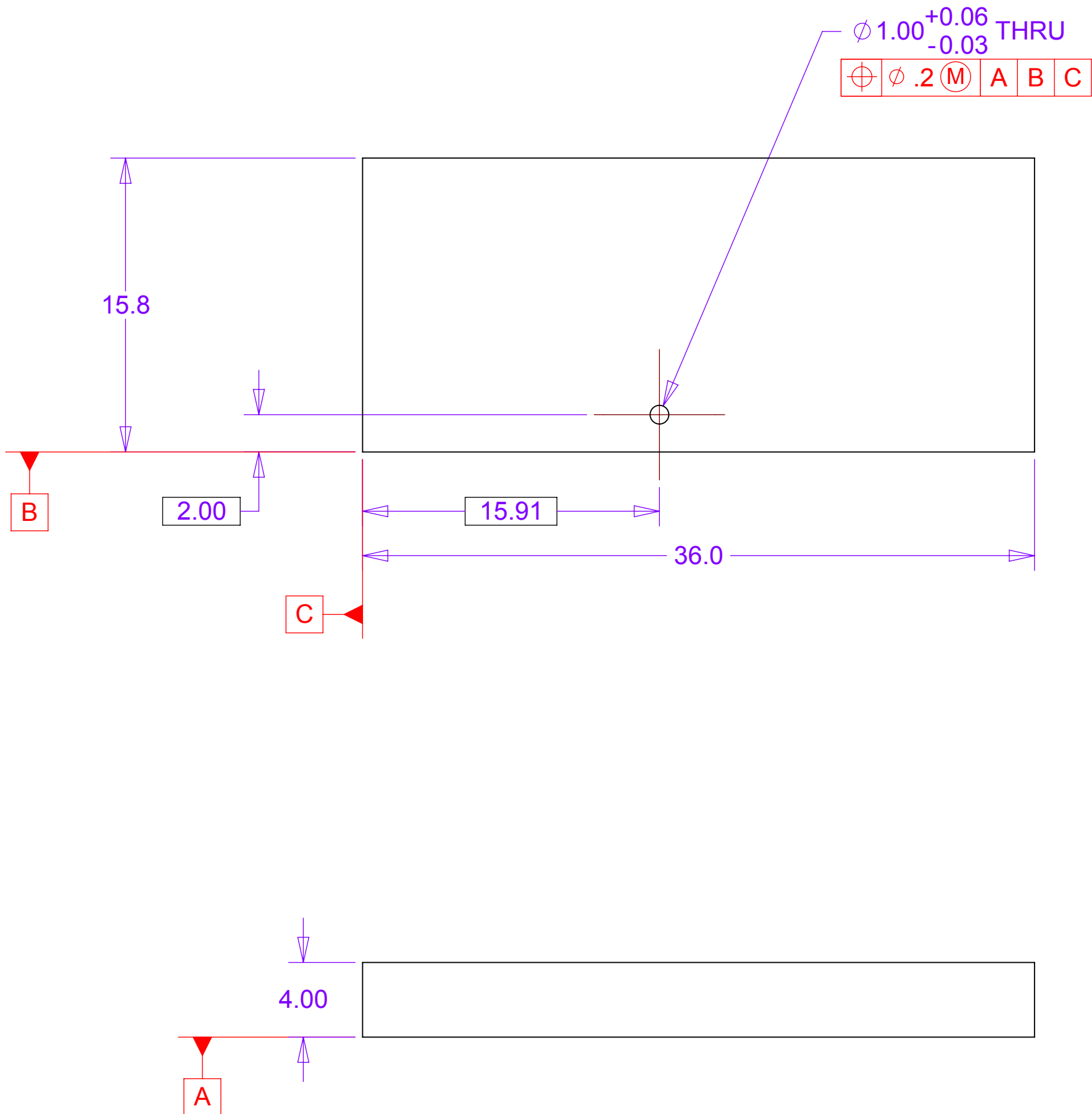
A

D

C

B

A

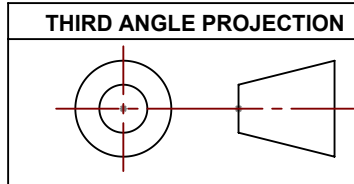


MATERIAL: ALUMINUM

NOTES: UNLESS OTHER WISE SPECIFIED

1. ALL DIMENSIONS IN MILLIMETERS
2. DIMENSIONS AND TOLERANCING PER ASME Y14.5M-1994
3. SURFACE TEXTURE PER ANSI/ASME B 46.1-1985
4. REMOVE ALL BURRS AND BREAK SHARP EDGES TO A MAXIMUM OF .4
5. ALL INSIDE CORNERS TO BE .4 RADIUS MAX
6. COUNTERSINK 82 DEGREES ALL TAPPED HOLES TO MAJOR DIAMETER
7. COUNTERSINK 82 DEGREES APPROXIMATELY .08/1.5 DEEP ALL DRILLED HOLES
8. PARTS TO BE THOROUGHLY CLEANED TO REMOVE ALL OIL, GREASE, DIRT AND CHIPS
9. PART NUMBER (DRAWING NO., DASH NO., REVISION NO., SERIAL NO.) TO BE CLEARLY MARKED ON THE PACKAGING BAG OR PART ITSELF.

THIS DOCUMENT CONTAINS INFORMATION THAT IS THE PROPRIETARY PROPERTY OF HYTEC, INC.
REPRODUCTION, DISCLOSURE, OR RELEASE TO OTHERS, MANUALLY OR ELECTRONICALLY,
IS STRICTLY PROHIBITED WITHOUT THE PRIOR WRITTEN CONSENT OF HYTEC, INC.



UNLESS OTHERWISE SPECIFIED: DIMENSIONS ARE IN MILLIMETERS -TOLERANCES-		CAD GENERATED DRAWING, DO NOT MANUALLY UPDATE DO NOT SCALE DRAWING		<div>HYTEC, INC</div> <div>TITLE</div> <div>PHENIX CENTRAL UPGRADE FVTX DETECTOR OUTER THERMAL MOUNT PLACEMENT JIG SPACER</div>																					
DECIMALS X = +/- .5 .X = +/- .1 .XX = +/- .01 .XXX = +/- .001	ANGULAR .X = +/- 30° .XX = +/- 15° SURFACE FINISH = 250	<table><tr><td></td><td>SIGNATURE</td><td>DATE</td></tr><tr><td>Designer</td><td>Roger L. Smith</td><td>5/10/2010</td></tr><tr><td>Drawn</td><td>Roger L. Smith</td><td>5/10/2010</td></tr><tr><td>Checked</td><td>Walt Sondheim</td><td>5/25/2010</td></tr><tr><td>Engineer</td><td>RJ Ponchione</td><td>5/10/2010</td></tr><tr><td>Approved</td><td>Walt Sondheim</td><td>5/25/2010</td></tr></table>			SIGNATURE	DATE	Designer	Roger L. Smith	5/10/2010	Drawn	Roger L. Smith	5/10/2010	Checked	Walt Sondheim	5/25/2010	Engineer	RJ Ponchione	5/10/2010	Approved	Walt Sondheim	5/25/2010	DWG. NO.		SIZE	SHEET NO.
	SIGNATURE			DATE																					
Designer	Roger L. Smith			5/10/2010																					
Drawn	Roger L. Smith			5/10/2010																					
Checked	Walt Sondheim	5/25/2010																							
Engineer	RJ Ponchione	5/10/2010																							
Approved	Walt Sondheim	5/25/2010																							
FINISH				111-PHX-01-5314	D	1 of 1																			
PART NO.				SCALE 4:1	REVISION																				
111-PHX-01-5314-1																									

87654321